



STEEL SHAPES
INDIRECT
DIRECT/INDIRECT

SERIES S29-DI

Options:

Mounting Options:

2/AC - Adjustable Aircraft Cable (48" Standard)

(2) per mounting location

2/P - Pendant Mounting

(2) per mounting location

Lamp Options:

T5 - 5/8" Diameter

T5HO - 5/8" Diameter (High Output)

Downlight Options:

SLT - Rectangular Slotted downlight component, backed with Perforated Steel and Opal Diffuser

PERF - integral perforated areas backed with Opal Acrylic Diffuser

Reflector Options:

SW - White is Standard

SS - Semi-Specular Aluminum

Color Options:

WHT - White is Standard

CA - Custom Colors

Electrical Options:

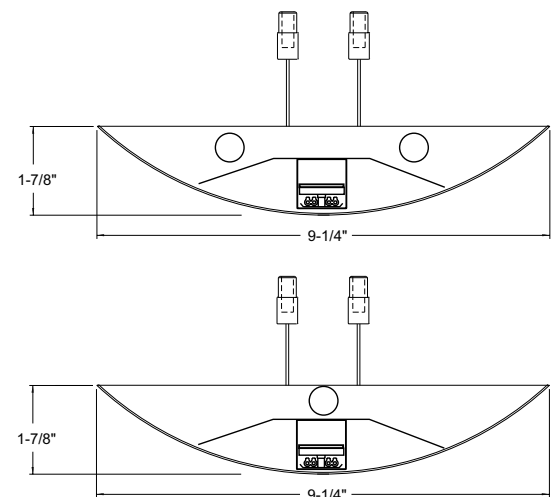
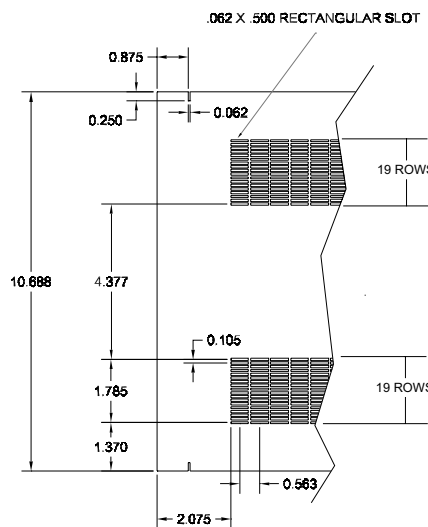
277 - 277 Volt Operation

EM - Emergency Ballast

DIM - Dimming Ballast

GLR - In Line Fusing

2CIR - 2 Circuit Wiring



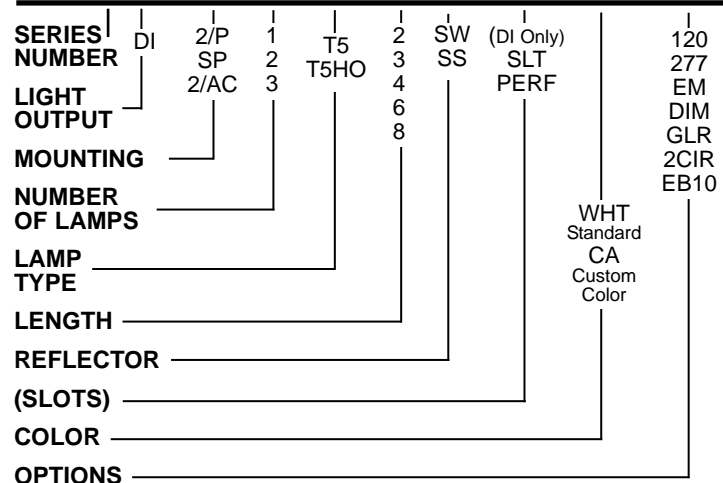
All PMC fixtures have powder coated housings, with precision-formed, high reflectance (Minimum Reflectance Factor 90%), enamel reflectors.

Fixtures are UL listed, and have **standard electronic ballasts**.

Each fixture is lamp-tested at the factory before shipment.

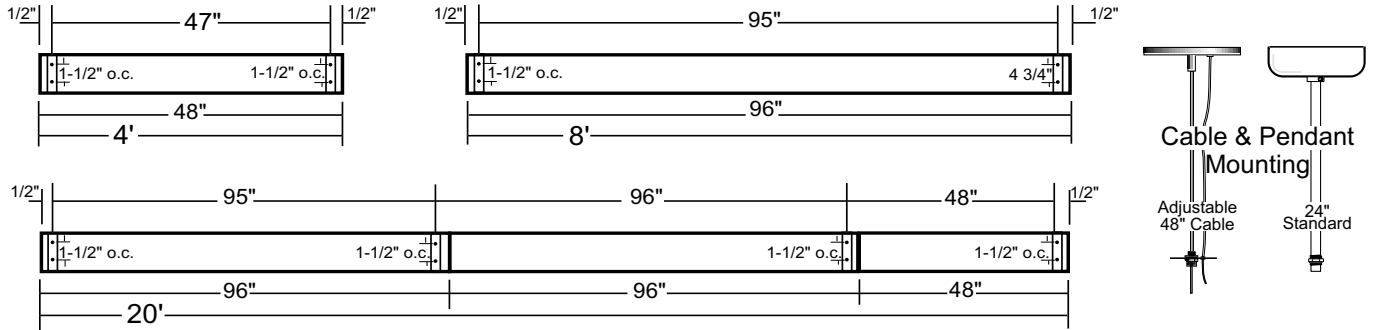
ORDERING INFORMATION

S29- DI- 2/AC- 2/T5HO- 4- SW- SLT- WHT- 277-EB10



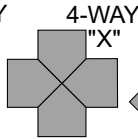
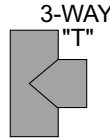
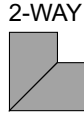
SERIES S29-DI

Dual Pendant & Dual Cable Mounting Locations



CORNERS

Patterns can be created using the corners shown. When fitting specific areas it is recommended that field measurements be supplied prior to fabrication.



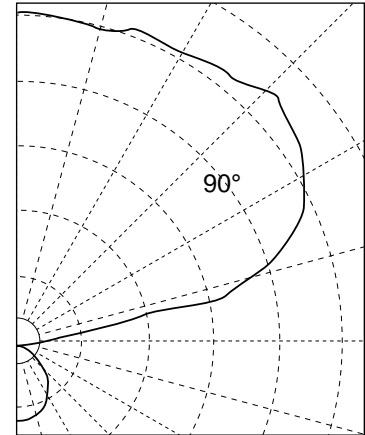
ANGLED CORNER
ANGLE MUST BE SPECIFIED

PHOTOMETRY

Model No: **S29-DI-2/AC-2/T5HO-4-PERF-120V-EB**
2 Lamps•5000 Lumens•Perf

Coefficients of Utilization

RCR	80%			70%			50%		
	70	50	30	70	50	30	50	30	10
0	.82	.82	.82	.70	.70	.70	.50	.50	.50
1	.74	.71	.68	.64	.61	.59	.44	.42	.41
2	.68	.62	.57	.58	.54	.50	.38	.36	.34
3	.62	.54	.48	.53	.47	.42	.34	.31	.28
4	.56	.48	.42	.48	.42	.37	.30	.27	.24
5	.51	.43	.36	.44	.37	.32	.27	.25	.21
6	.47	.38	.32	.41	.33	.28	.24	.20	.18
7	.44	.34	.28	.38	.30	.25	.22	.18	.16
8	.41	.31	.25	.35	.27	.22	.20	.16	.14
9	.38	.28	.23	.32	.25	.20	.18	.15	.12
10	.35	.26	.20	.30	.23	.18	.16	.13	.11



CANDELLA DISTRIBUTION

SPECIFICATIONS

CONSTRUCTION: Fixture Exterior Chassis is die-formed, and welded of 20 gauge, cold rolled steel, perforated at sides and backed with white opal. Internal construction of 20 gauge, die formed CRS

MOUNTING: Standard Pendant (**P**) stem is 1/4 IPS, 24" long with 5" Dia canopy. Swivel Pendant with 45° Limit (**SP**). Adjustable length twin aircraft cable assembly has 48" cable, 5" Dia. Canopy with cord for power locations (**AC**).

FINISH: Standard fixtures are powder coated white. Reflective internal components are finished in

high gloss white enamel (Minimum Reflectance Factor 90%).

ELECTRICAL: All fixtures are UL listed, and are shipped fully wired, individually tested, with Electronic Ballasts shipped as standard equipment

OPTIONS:

FINISH: A range of custom colors are available to meet Architect specifications. Please consult the factory.

ELECTRICAL: 277 Volt Ballast (**277**). Dimming Ballast (**DIM**). Emergency Ballast (**EM**) Note:

unless specified, PMC will select ballasts to meet requirements. In Line Fusing (**GLR**). 2 Circuit Wiring (**2CIR**).

All dimensions are subject to change, Consult the factory before making structural alterations.



PMC LIGHTING