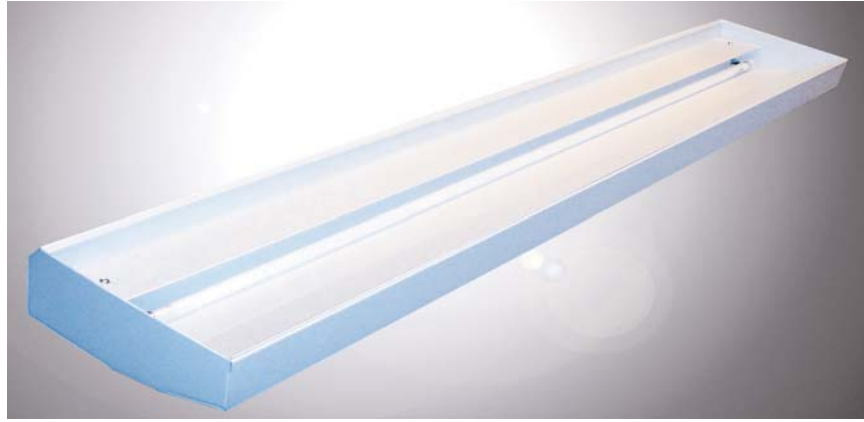


TYPE:



SERIES SCCS-RK

PERIMETER

8.81" x 3.31"

OPTIONS:

Mounting Options:

S - Surface mounting for cove applications

Lamp Options:

BX - Biax

T5 - 5/8" diameter lamp

T5HO - 5/8" diameter lamp (*High output*)

T8 - 1" diameter lamp

Color Options:

WHT - White (*Standard*)

CA - Custom colors

Electrical Options:

UNV - Universal voltage 120/277

277V - 277 volt operation

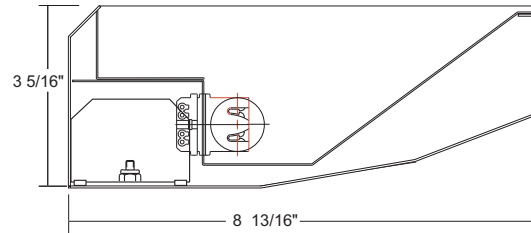
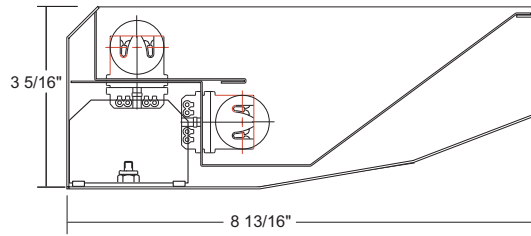
347V - 347 volt operation

2CIR - 2 circuit wiring

DIM - Dimming ballast (*Consult factory*)

EM - Emergency ballast

GLR - In line fusing



The SCCS-RK series fixture's housings are die formed of heavy gauge steel for structural stability. Their external housing integral angles allow multi-position mounting to assure proper light throw. Internal bracketry and supports are to be of 20 gauge CRS. The mounting holes are to be located on multiple surfaces to allow adjustment at time of installation. All PMC fixtures have powder coated housings, with precision-formed, high reflectance, enamel reflectors for optimal optic efficiency.

Fixtures are UL/cUL listed, and have **standard electronic ballasts**.

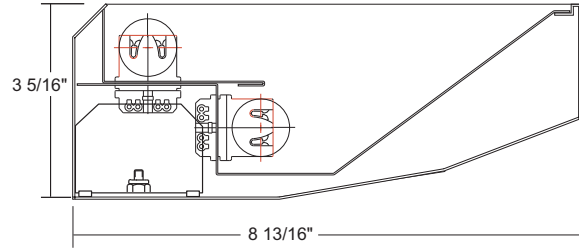
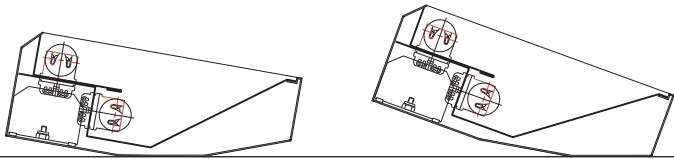
Each fixture is lamp-tested at the factory before shipment.

ORDERING INFORMATION

Series	Output	Mounting	Lamp / Type	Length	Diffuser	Color	Voltage	Options
SCCS-RK	I	S	1 2	2' 3' 4' 6' 8'		WHT White (Standard) CA Custom Color	UNV Universal Voltage 277V 277 Volt Operation 347V 347 Volt Operation	2CIR 2 Circuit Wiring DIM Dimming Ballast EM Emergency Ballast GLR In Line Fusing
SCCS-RK Perimeter	I Indirect	S Surface	1 2 BX BIAX T5 5/8" Diameter T5HO 5/8" Diameter (High Output) T8 1" Diameter	2' 3' 4' 6' 8'		WHT White (Standard) CA Custom Color	UNV Universal Voltage 277V 277 Volt Operation 347V 347 Volt Operation	2CIR 2 Circuit Wiring DIM Dimming Ballast EM Emergency Ballast GLR In Line Fusing



SERIES SCCS-RK

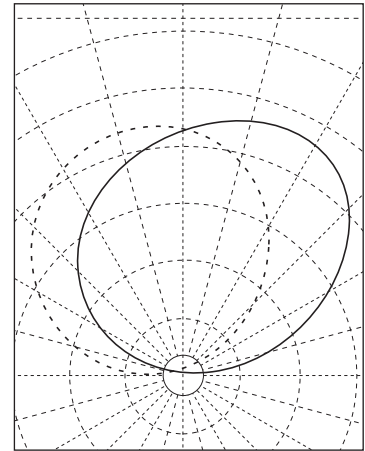


PHOTOMETRY

Model No: **SCCS-RK-I-S-2/T8-4-WHT-120V**
2 Lamp•2850 Lumens•Open

Coefficients of Utilization

RCR	80%			70%			50%		
	70	50	30	70	50	30	50	30	10
1	.70	.71	.71	.62	.60	.61	.43	.41	.42
2	.65	.62	.58	.57	.53	.51	.37	.35	.33
2	.60	.54	.51	.52	.47	.44	.33	.31	.29
4	.54	.48	.43	.47	.42	.37	.31	.28	.25
5	.50	.43	.39	.44	.36	.32	.27	.25	.22
6	.47	.37	.33	.40	.34	.28	.24	.21	.18
7	.43	.34	.29	.35	.31	.25	.22	.18	.17
8	.39	.32	.25	.33	.28	.23	.20	.16	.14
9	.37	.27	.23	.31	.24	.20	.19	.14	.12
10	.33	.25	.20	.29	.22	.17	.17	.13	.11



CANDELLA DISTRIBUTION

SPECIFICATIONS

CONSTRUCTION: Fixture Chassis die-formed of 20 Gauge (or Heavier) CRS. Internal Bracketry and Reflective surfaces of 20 Gauge Steel. Asymmetric reflector has prismatic lens placed for shadow free-light distribution.

MOUNTING: Surface Mounted for cove mounting (**S**). Wall Mounting for use as indirect Wall Wash. Key hole slots for Mounting. (**W**).

FINISH: Standard fixture housing is gloss white (**WHT**) Reflective internal steel components are finished in high gloss white enamel (Minimum Reflectance Factor 90%).

ELECTRICAL: All fixtures are UL listed, and are shipped fully wired,

individually tested, with Electronic High Output Ballasts shipped as standard equipment

OPTIONS:

FINISH: A range of custom trim colors are available to meet Architect specifications. Please consult the factory.

ELECTRICAL: 277 Volt Ballast (**277**). High Output Ballast, 120 V., (**120HO**). High Output Ballast 277V, (**277HO**). Dimming Ballast (**DIM**). Emergency Ballast (**EM**) Note: unless specified, PMC will select ballasts to meet requirements.

In Line Fusing (**GLR**).
2 Circuit Wiring (**2CIR**).

All dimensions are subject to change, Consult the factory before making structural alterations.

